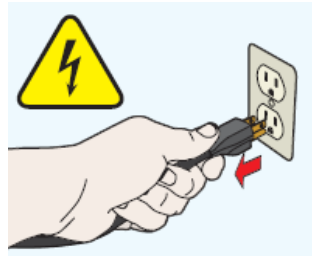


DMS700 and SCP715/717/740 Maintenance Procedures

- Return projector to standby mode. After the standby button turns amber, power unit OFF at main input power switch if equipped and unplug the power cord from the wall outlet.



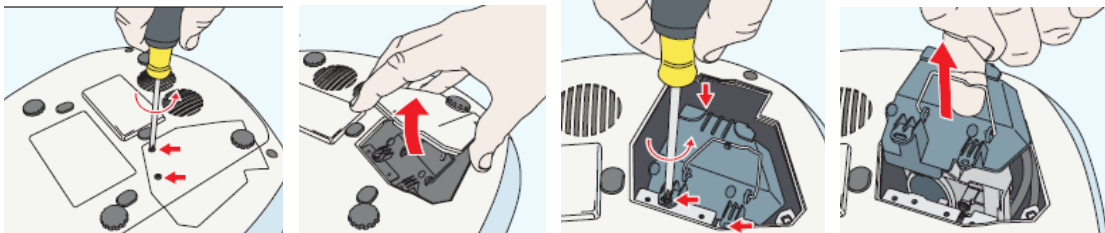
- Every month or about 100 hours of usage, vacuum all air vents (as equipped) on the left, right, back, and bottom of projector.



- Inspect the lamp for damaged or loose wire connections. Does the lamp appear intact without visible deposits on the bulb at the back reflector? Are there any leaks indicated by a powdery substance on front lamp tip wire? Are there any discolored lamp connections or loose wire terminals?

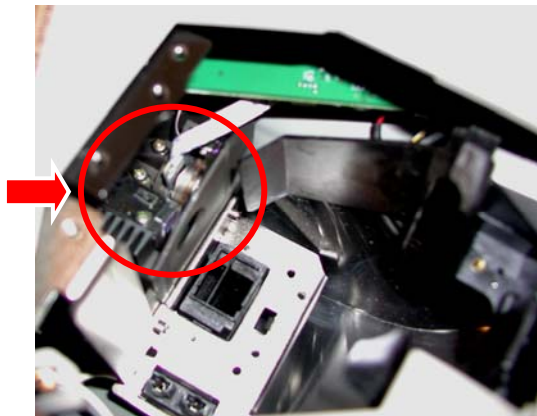
If any of these conditions are found, then replace the lamp. (See photos at end of document for examples).

- At least once a year or about 500 hours of usage, unscrew lamp door retaining screws and remove lamp door. Unscrew lamp module retaining screws and carefully remove lamp module. (Illustrations below may not depict actual model).



- Blow compressed or canned air into the side air vents from outside the unit to dislodge dust. Then through the lamp cavity (see illustration below), blow air onto the color wheel and optical engine. Vacuum the lamp cavity to remove all dislodged dust.

Blow air on
Color Wheel &
Optical Engine



Caution

Wear Personal Protective Equipment such as safety glasses as a precaution against blowing debris.

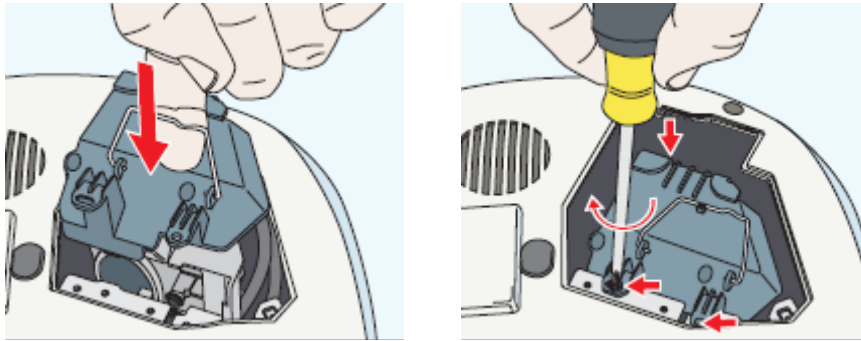
Note: Do not insert nozzle of air gun or canned air into the vent or internal damage may occur. If water droplets should appear from the air blowing system, stop and allow them to dry up prior to continuing the cleaning procedure.

Maintenance Procedures, continued

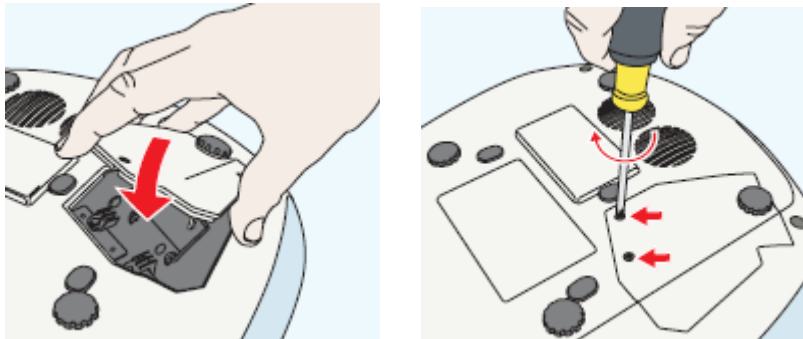
6. Vacuum the lamp inlet and exhaust vents to clear any dust build up.



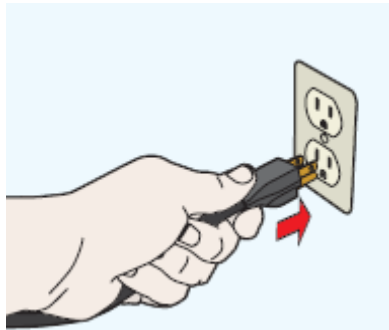
7. Install the lamp taking care to seat it fully into the lamp socket connection and tighten the lamp retaining screws.



8. Replace the Lamp Door and secure it with the retaining screws.



9. Plug in power cord and turn on main input power switch (if equipped). Test unit to verify it operates correctly.

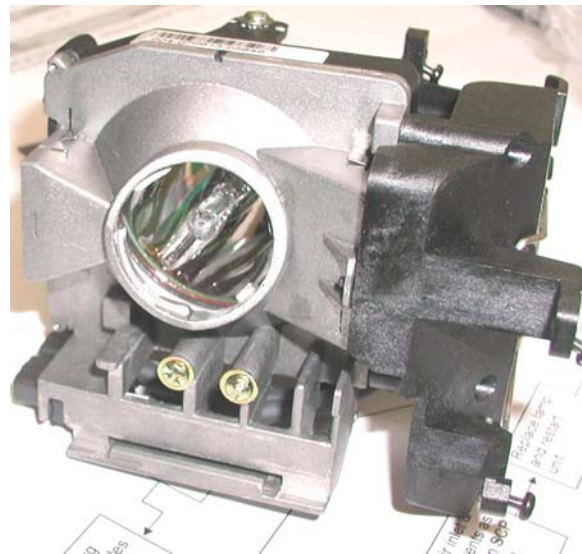
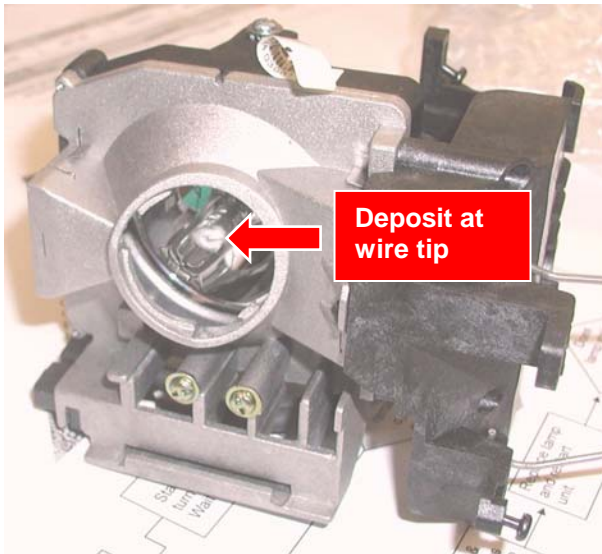


Examples of Lamp Failures

Sample #1: Cloudy deposit on lamp at back reflector.



Sample #2: Damaged Lamp Tip (indicated by powdery deposit on wire at tip)



Examples of Lamp Failures, continued

Sample #3: Loose and discolored Lamp Lead Connection:



Sample #4: Dust on Lamp cooling inlet (must vacuum to remove):

